



MISTORIA
ESTATE AGENTS



8 Overton Close Manchester

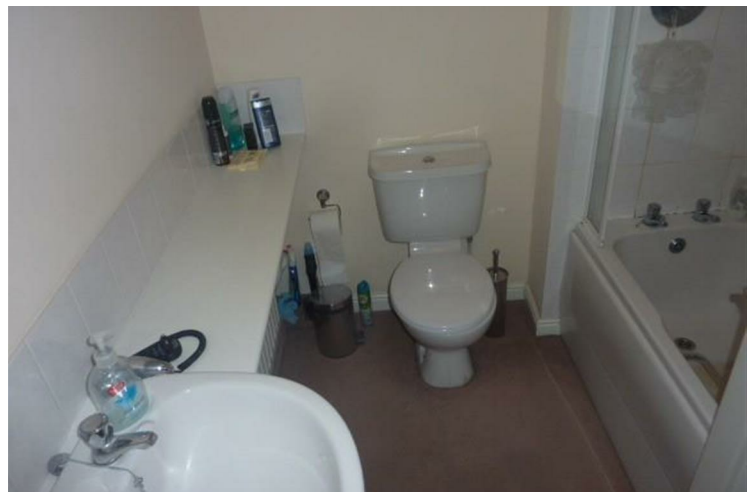
£825 PCM

FAMILY HOME FOR RENT

Nestled in the sought-after area of Overton Close, Radcliffe, this modern two-bedroom house offers a delightful blend of comfort and convenience. Spanning an impressive 603 square feet, the property boasts two well-proportioned reception rooms, providing ample space for both relaxation and entertaining.

The ground floor features a convenient WC, enhancing the practicality of the home for both residents and guests. One of the standout features of this property is the large rear garden, which presents an excellent opportunity for outdoor enjoyment, gardening, or simply unwinding in a tranquil setting.

The desirable location of Overton Close ensures that residents benefit from a friendly community atmosphere while remaining close to local amenities and transport links. This charming house is perfect



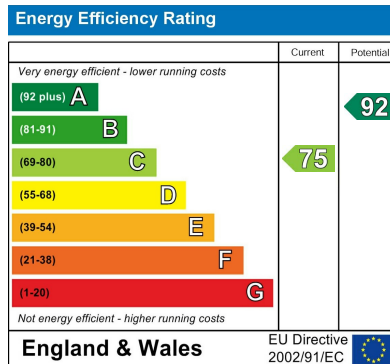
Full Description

Pick My Pad are delighted to offer this 2 bedroom property onto the market for let. Property will be let unfurnished.

More details to follow...







Agents Note: Whilst every care has been taken to prepare these particulars, they are for guidance purposes only. All measurements are approximate and are for general guidance purposes only and whilst every care has been taken to ensure their accuracy, they should not be relied upon and potential buyers/tenants are advised to recheck the measurements

Bolton Mistoria
108-110 Deansgate
Bolton
BL1 1BD

01204 800766
info@mistoria.co.uk
mistoria.co.uk

